

# HYDRAULIC BREAKER

## SQ Premium Series

**SOOSAN**  
HARD HITTING RELIABILITY





## **“Reliable & Hard-Hitting BREAKERS”**

**The SQ PREMIUM SERIES is the latest technologically advanced breakers offered from SOOSAN and delivers the most powerful hitting force yet!**

The SQ PREMIUM SERIES additionally integrates features increase productivity, lower cost of operation and improves operator convenience; all to provide the best overall breaker value available in the market today.

# SQ PREMIUM SERIES

The SQ Series is Soosan's latest and most innovated hydraulic breaker. The SQ Series is the culmination more than four decades of breaker experience since the company's inception in 1984.

Through continuous dialogue and input from our world-wide customers, Soosan has gained advanced product and application insights from quarry, mining and the construction industries. The SQ series is a generous and innovated hydraulic breaker that enhances the superiority of the percussion mechanism and easy maintenance of the existing SB series.

## Advanced design technology for output energy

The well-known and powerful performance of the SB Series hydraulic breakers is upgraded with the SQ Series. With design improvements to the percussion mechanism these provide increased reliability and heavy-duty operation.

## Enhanced vibration dampening & sound suppression system

The SQ Series meets strict international noise regulations and provides lower environmental sound pollution with greater operator comforts.

## Many special features for operator convenience and productivity

IPC & ABH System, built-in Auto-Greaser System and many special functions maximize operator convenience and productivity.

## Service and maintenance friendly

The service panel gives direct and easy access to key components without removing the power cell from the housing.



# SQ UNIQUE TECHNOLOGY

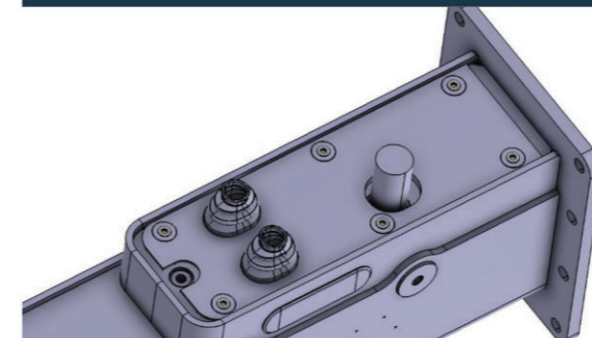
## Built-in Auto-Greaser System (SQ35-SQ50)



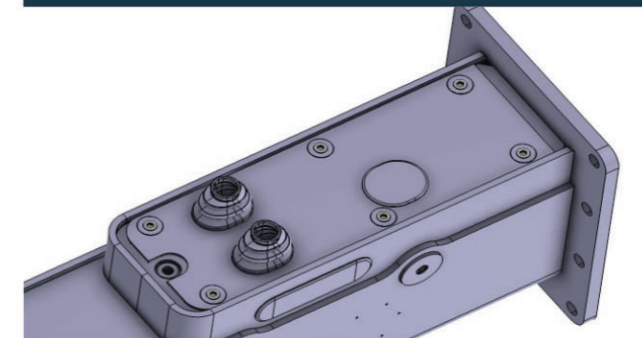
**An innovative Auto-Greaser System for SQ premium series to lower operating cost**

- Simple built-in Auto-Greaser System
- Elimination of hoses and fittings connections
- Easy to replace grease cartridge
- Can be closed when not in use (operator selectable)
- Easy to check and maintenance

When in use of Auto-Greaser System



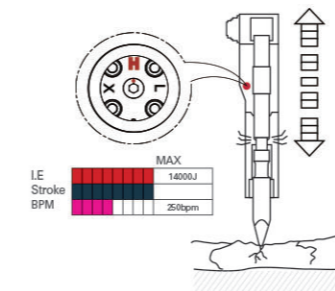
When not in use



## IPC & ABH System Control (SQ60-SQ181)

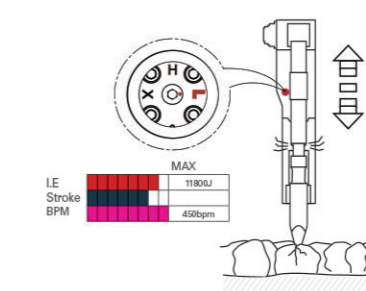
\* Integrated Power Control and Anti-Blank Hammering

H - MODE



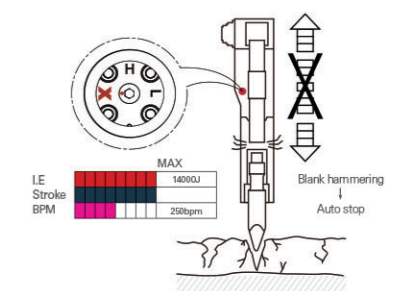
Long stroke & extra power. ABH system is OFF

L - MODE

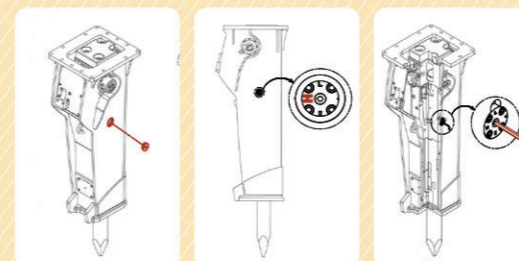


Short stroke & maximum frequency. ABH system is OFF

X - MODE



Long stroke & extra power. ABH system is ON



Selector switch offers three operating modes and can be simply altered to each mode :

- H - mode : Long stroke with maximum power, ABH is off
- L - mode : Short stroke with maximum frequency, ABH is off
- X - mode : Long stroke with maximum power, ABH is on (Blank hammering → Auto stop)
- Easy start

## SMALL RANGE BREAKERS

Soosan designs, manufactures and supports reliable and cost effective a full range of compact SQ breakers for all makes and models of skid/track loaders and compact excavators and backhoe loaders.



### **Built-in Auto-Greaser System**

Soosan built-in Auto-Greaser System is a new concept in the market. This system is designed as simple structure, there are no hoses or fittings connection.

Operator can simply choose whether use Auto-Greaser System or not by closing plug. Easy check and maintenance provide comfort to operator.

### **Unique advanced power control**

This feature provides the optimum breaker power and blow frequency for the job-site requirements.

Operator can choose from three stroke selection to increase production efficiency while reducing operating and maintenance cost.

### **Fewer components, less maintenance**

Simple yet rugged design of SQ small breaker improves reliability while reducing maintenance cost.



### **High power to weight ratio**

The use of premium materials and high technology results in less weight, and outstanding performance.

## FAST FACTS

- Patented built-in valve system
- Slip-fit lower bushing
- Accumulator free design
- Fully enclosed vibration reducing housing- no through bolt.
- Unique built-in Auto-Greaser System and advanced power control system (Available on SQ35-SQ50 AutoLube)



# MEDIUM-HEAVY RANGE BREAKERS

SQ medium and heavy breakers are designed for operator to maximize productivity with unique features.



## **Slim profile with robust structure**

Slim profile for better visibility in narrow trench work. Hardox steel reinforcements at the lower end of the housing, protect the casing and power cell.

## **IPC & ABH system**

IPC (Integrated Power Control) & ABH (Anti-Blank Hammering) system allow you to choose from 3 different modes. The automatic anti-blank hammering function can be activated off or on. The operator can select the optimum mode from high frequency with normal power to low frequency with extra power. With this advanced system, the operator may choose the most efficient operating mode in accordance with site requirements easily and in a matter of minutes.

## **Auto shut-off & easy start**

Hydraulic breaker operating can be automatically stopped in order to prevent consequential damage to the power cell due to the blank hammering. Especially in secondary breaking or if an operator is unskilled.

Hydraulic breaker operation is easy to restart when soft pressure is applied to the chisel on the work surface.

## **Tie bolt nut locking device**

This prevents the power cell from consequential damage that may be caused by loosening of the tie bolt.



### **FAST FACTS**

- Anti-blank firing and easy start function
- Variable blow frequency and impact power
- Swivel hose adapters
- Anti-dust protection
- Improved vibration-noise damping absorbs
- Design Award -Winner
- 9 models to fit all makes and models carriers from 33,069 lbs-198,416 lbs(15-90 tons)

# SMALL RANGE BREAKERS



## Applications

- Curb and gutter repair
- Site preparation
- Municipal and governmental public works
- Infrastructure
- Foundation works
- Road construction
- Demolition works
- General construction works



Description	Unit	SQ10	SQ20	SQ30	SQ35 AutoLube	SQ40 AutoLube	SQ43 AutoLube	SQ45 AutoLube	SQ50 AutoLube
Impact Energy	ft/lb	250	375	450	550	800	1,100	1,500	2,000
Operating Weight	lb (kg)	229 (104)	287 (130)	344 (156)	510 (231)	660 (299)	836 (379)	1,249 (566)	1,864 (845)
Required Oil Flow	gal/min (l/min)	4-9 (15-35)	5.3-11.9 (20-45)	6.6-14.5 (25-55)	7.9-17.2 (30-65)	10.6-19.8 (40-75)	13.2-23.8 (50-90)	15.9-29.1 (60-110)	21.1-31.7 (80-120)
Operating Pressure	psi (bar)	1,280-1,707 (90-120)	1,280-1,707 (90-120)	1,280-1,707 (90-120)	1,422-1,849 (100-130)	1,565-1,991 (110-140)	1,707-2,134 (120-150)	1,849-2,276 (130-160)	2,134-2,418 (150-170)
Impact Rate									
Short Stroke	bpm	-	-	-	960-1,690	900-1,650	800-1,330	740-1,195	650-1,020
Middle Stroke	bpm	-	-	-	800-1,290	790-1,220	700-1,130	670-1,030	590-880
Standard Stroke	bpm	800-1,530	700-1,320	600-1,250	620-1,040	570-1,020	540-800	525-850	455-730
Hose Diameter	in	3/8, 1/2	3/8, 1/2	1/2	1/2	1/2	1/2	3/4	3/4
Tool Diameter	in (mm)	1.6 (40)	1.8 (45)	2.1 (53)	2.4 (60)	2.7 (68)	3.0 (75)	3.3 (85)	3.9 (100)
Applicable Carrier	lbs (ton)	1,700-5,500 (0.8-2.5)	2,600-6,600 (1.2-3.0)	4,400-9,900 (2.0-4.5)	6,600-13,200 (3-6)	8,800-19,800 (4-9)	11,000-26,400 (5-12)	15,400-33,000 (7-15)	19,800-35,200 (9-16)
Noise Level	dB (A)	105.5	106.8	108.5	116.9	108.7	114.5	112	113.5

# MEDIUM-HEAVY RANGE BREAKERS



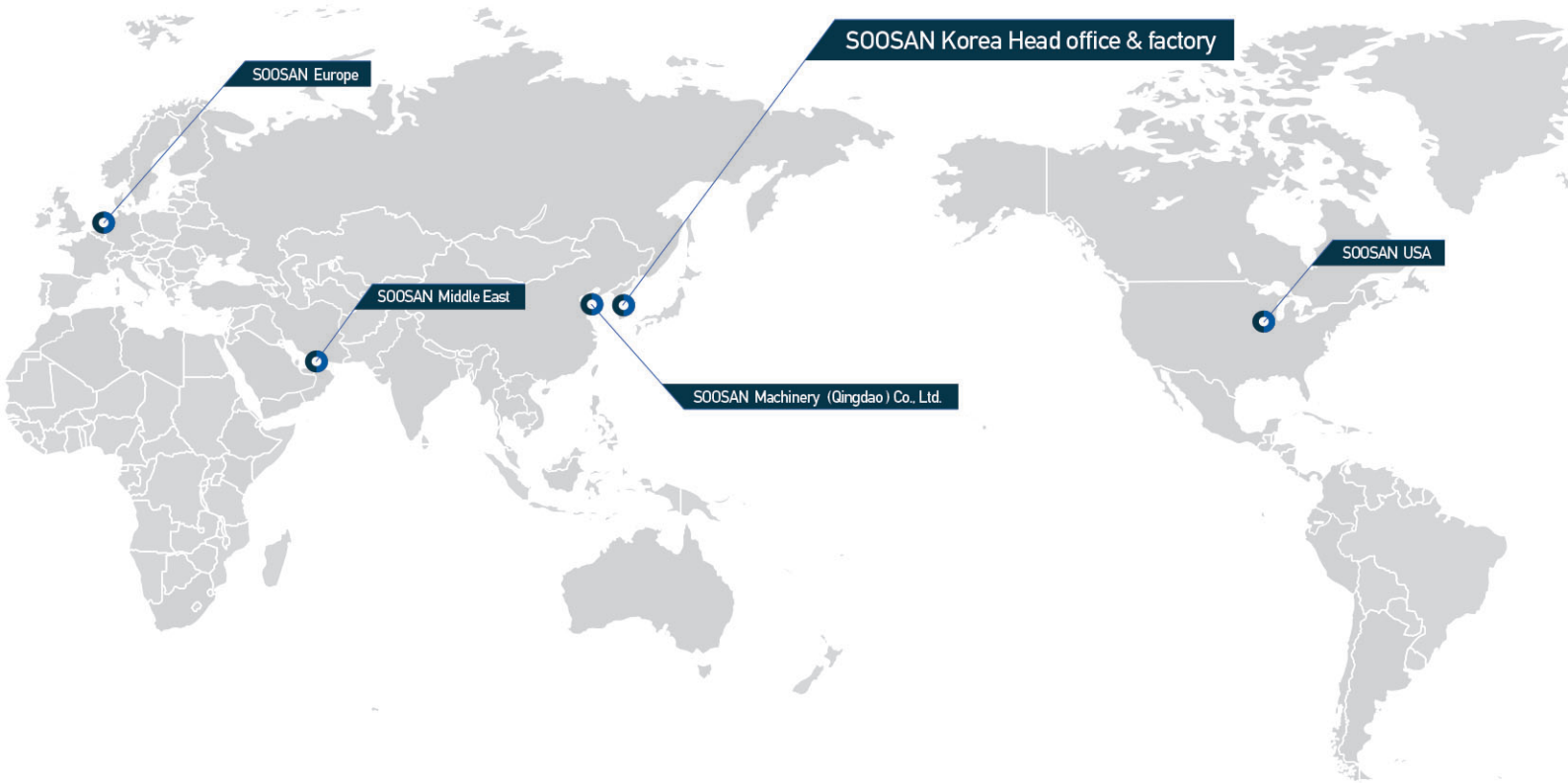
## Applications

- Primary and secondary breaking in quarries
- Site preparation, foundation works
- Road construction
- Demolition works, heavily reinforced concrete
- Trenching
- Tunneling
- Bench leveling
- General construction works



Description	Unit	SQ60	SQ70	SQ80	SQ100	SQ120	SQ130	SQ140	SQ150	SQ181
Impact Energy	ft/lb	3,000	4,000	5,000	6,000	7,500	8,500	10,000	12,000	15,000
Operating Weight	lb (kg)	3,543 (1,607)	3,878 (1,759)	4,526 (2,053)	4,817 (2,185)	5,889 (2,671)	6,687 (3,033)	6,986 (3,169)	8,708 (3,950)	12,983 (5,889)
Required Oil Flow	gal/min (l/min)	23.8-31.7 (90-120)	26.4-39.6 (100-150)	31.7-47.6 (120-180)	39.6-55.5 (150-210)	47.6-63.4 (180-240)	52.8-68.7 (200-260)	52.8-68.7 (200-260)	55.5-76.6 (210-290)	93-119 (350-450)
Operating Pressure	psi (bar)	2,276-2,560 (160-180)	2,276-2,560 (160-180)	2,276-2,560 (160-180)	2,276-2,560 (160-180)	2,276-2,560 (160-180)	2,276-2,560 (160-180)	2,276-2,560 (160-180)	2,276-2,560 (160-180)	2,560-2,845 (180-200)
Impact Rate										
H-mode	bpm	350-650	350-600	350-500	300-450	300-450	250-400	200-350	200-350	200-300
X-mode	bpm	350-650	350-600	350-500	300-450	300-450	250-400	200-350	200-350	200-300
L-mode	bpm	600-850	500-850	500-700	430-580	430-580	380-550	300-500	320-470	300-400
Hose Diameter	in	1	1	1	1	1 1/4	1 1/4	1 1/4	1 1/4	1 1/4
Tool Diameter	in (mm)	4.9 (125)	5.3 (135)	5.5 (140)	5.9 (150)	6.1 (155)	6.5 (165)	6.5 (165)	6.9 (175)	7.9 (200)
Applicable Carrier	lbs (ton)	33,000-40,000 (15-18)	40,000-46,000 (16-21)	40,000-58,000 (18-26)	55,000-77,000 (25-35)	62,000-77,000 (28-35)	66,000-100,000 (30-45)	71,000-110,000 (30-45)	88,000-121,000 (40-55)	110,000-200,000 (50-90)
Noise Level	dB (A)	115	120	118	120	123	124	124	125	125

# SOOSAN Global Network



## Head office / Hwaseong Factory

260, Jeongmunsongsan-Ro, Yanggam-Myeon, Hwaseong-Si, Gyeonggi-Do, Korea  
TEL +82-31-350-5273 FAX +82-31-624-4516 EMAIL info2@soosan.co.kr

## SOOSAN China

Soosan Machinery (Qingdao) Co., Ltd.

North of Keyun-Road, East of Zhengyuan-Road, Qingdao National High-Tech Industrial Development Zone, Qingdao, Shandong Province, China  
TEL +86-532-8796-5655 FAX +86-532-6868-2360 EMAIL saomai@soosan.co.kr

## SOOSAN Europe

Ohmweg 18, 3208KE, Spijkennisse, The Netherlands  
TEL +31-181-697-593 FAX +31-181-641-038 EMAIL info@soosan.nl

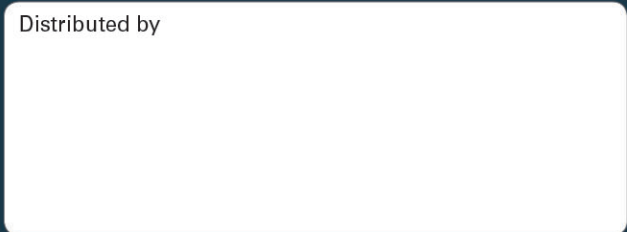
## SOOSAN Middle East

P.O. BOX : 262280, LOB14-313 Jebel Ali Free Zone, Dubai, UAE  
TEL +971-4-881-0502 FAX +971-4-881-0503 EMAIL kimht@soosan.co.kr

## SOOSAN USA, Inc.

1261 Wiley Rd, Unit B Schaumburg, IL 60173  
TEL +1-847-744-5982 FAX +1-847-890-6728 EMAIL keesj@soosanmachinery.com  
www.soosanmachinery.com

Distributed by



[www.soosanmachinery.com](http://www.soosanmachinery.com)

Copyright SOOSAN. SOOSAN reserves the right to alter specifications without prior notice



Printed in Korea  
English Ver. 2022.12