

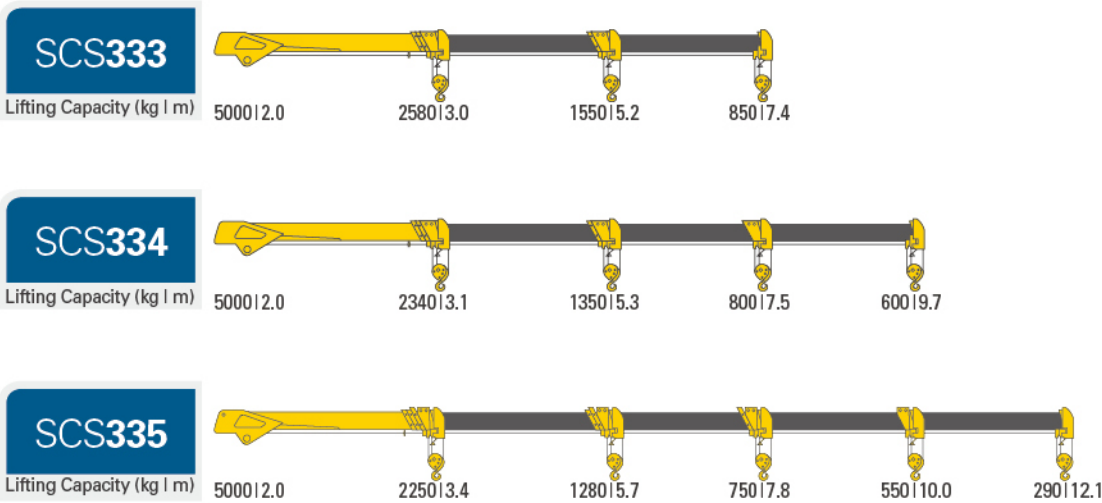
# POWER CRANE SERIES

## SOOSAN STIFF BOOMS TYPE

**SOOSAN**  
HEAVY INDUSTRIES



# Small Duty Range



Description		Unit	SCS 333	SCS 334	SCS 335
Capacity	Max. Lifting Capacity	ton-m	8.0	8.0	8.0
	Max. Lifting Height	m	9.6	11.9	14.2
	Max. Working Radius	m	7.4	9.7	12.1
	Max. Working Height	m	10.1	12.4	14.9
Boom	Type / Section		Penta / 3	Penta / 4	Hexa/5
	Boom Extension Speed	m / sec	4.4 / 14	6.6 / 14	8.68/23
	Boom Moving Up and Down Speed	° / sec		1~80 / 9	
Winch	Winch Hauling Speed	m / min (Layer/Line)		17 (4/4)	
	Wire Rope	ø mm / m		ø 8 × 80m [6xFI(29)]WRC	
Slewing	Turning Angle			Consecutively turn 360°	
	Turning Speed	rpm		2	
	Turning Method		Driven by the hydraulic motor and speed is reduced by the gear		
Outrigger	Type	Front	Horizontally and manually extracted and retracted		
		Rear	Optional item		
Hydraulic System	Width	m		4.09	
	Rated Flow Rate	ℓ / min		50	
	Rated Pressure	kgf / cm <sup>2</sup>		210	
	Oil Tank Capacity	ℓ		50	
	Applicable truck Chassis (Payload)	ton		4.5~8.0	
Option	Bucket (FRP 850 * 1200 : 150kgs)		•	•	•
	Bucket (Metalic 850 * 1400 : 180kgs)		•	•	•
	AML		•	•	•
	Overloading Prevention Device		•	•	•
	Overwinding Prevention Device		•	•	•
	Overwinding Alarm Device		•	•	•
	Single Line Hook (800kgf)		•	•	•
	Outrigger (Rear - Manual)		•	•	•
	Outrigger (Rear - Hydraulic)		•	•	•
Winch Guide Roller		•	•	•	

**Safety Devices**

Pressure relief valve for hydraulic circuit, Overcenter valve, Hydraulic swing locking system, Automatic mechanical brake for winch, Pilot check valve for outriggers, Hook safety latch, Boom angle indicator with load indicator, Overwinding alarm system (Option), Overloading prevention device (Option)

• The above specifications are subject to change without prior notice for improvement. • Bucket, Cabin : Provision of Bucket may require allowances by govern law



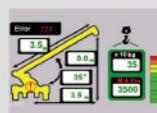
**Winch Guide Roller & Uncoiling Limiter**

In order to avoid wire twisting, SOOSAN Stiff Booms crane provides Winch guide roller and Uncoiling Limiter. It more efficient way to maintain wire status and working stability.



**Remote Control**

Wireless remote controller as an option, it makes crane operation more efficient, remote control can be used freely in any condition.



**AML**

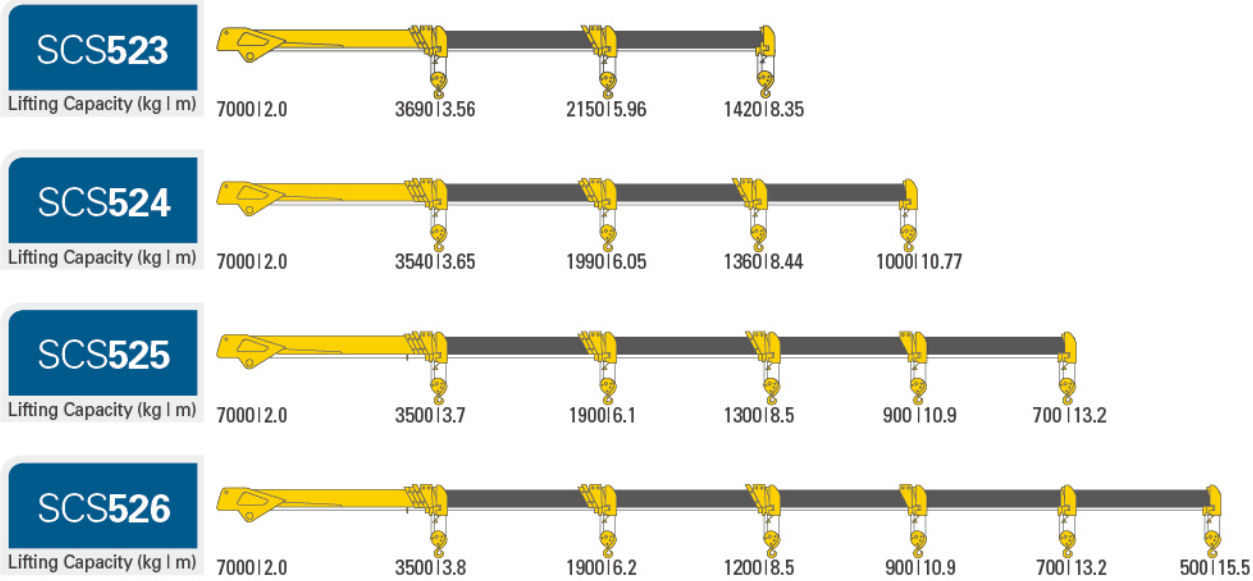
Advanced AML(Load Moment Limiter) that monitors and controls crane working conditions including the state of a lifted load to ensure safer operation.



**Silenced & 2 Speed Aux. Winch**

By choosing a silenced winch, operation noise is brought down to minimum level and more safety operation guarantees by Mechanical Auto Break. And 2 speed piston motor and planetary reduction gear allows safe operation, as well as high precision operation.

# Medium Duty Range



Description		Unit	SCS 523	SCS 524	SCS 525	SCS 526
Capacity	Max. Lifting Capacity	ton-m	14	14	14	14
	Max. Lifting Height	m (Aux. Boom)	10.8	13	15.5	17.8
	Max. Working Radius	m (Aux. Boom)	8.3	10.7	13.2	15.5
	Max. Working Height	m (Aux. Boom)	11.5	13.8	16.2	18.5
Boom	Type / Section		Hexa / 3	Hexa / 4	Hexa 5	Hexa 6
	Boom Extension Speed	m / sec	4.79 / 21	7.12 / 32	9.45 / 34.2	11.78 / 34.9
	Boom Moving Up and Down Speed	° / sec	1 ~ 78 / 14			
Winch	Winch Hauling Speed	m / min (Layer/Line)	10 (4/4)			
	Wire Rope	ø mm / m	ø8 x 70 [6 x F](29)IWRC			
Slewing	Turning Angle		Consecutively turn 360°			
	Turning Speed	rpm	2			
	Turning Method		Driven by the hydraulic motor and speed is reduced by the gear			
Outrigger	Type	Front	Horizontally and manually extracted and retracted			
		Rear	Optional item			
	Width	m	3.8			
Hydraulic System	Rated Flow Rate	ℓ / min	60			
	Rated Pressure	kgf / cm <sup>2</sup>	210			
	Oil Tank Capacity	ℓ	60			
	Applicable truck Chassis (Payload)	ton	5.0-11.5			
Option	Bucket (FRP 850 * 1200 : 150kgs)		•	•	•	•
	Bucket (Metalic 850 * 1400 : 180kgs)		•	•	•	•
	AML		•	•	•	•
	Overloading Prevention Device		•	•	•	•
	Overwinding Prevention Device		•	•	•	•
	Overwinding Alarm Device		•	•	•	•
	Single Line Hook (800kgf)		•	•	•	•
	Outrigger (Rear - Manual)		•	•	•	•
	Outrigger (Rear - Hydraulic)		•	•	•	•
Load Indicator		•	•	•	•	
Winch Guide Roller		•	•	•	•	

### Safety Devices

Pressure relief valve for hydraulic circuit, Overcenter valve, Hydraulic swing locking system, Automatic mechanical brake for winch, Pilot check valve for outriggers, Hook safety latch, Boom angle indicator with load indicator, Overwinding alarm system (Option), Overloading prevention device (Option)

- The above specifications are subject to change without prior notice for improvement.
- Bucket, Cabin : Provision of Bucket may require allowance by govern law



#### ➤ Over center & Holding valves

Gentrified the over center valve and holding valve for smooth / safe operation when moving boom. Durability has been highly increased as well.



#### ➤ Wireless, over-winding prevention system

SOOSAN wireless type over-winding prevention system offers smaller risk and convenient than ordinary wire type.

# Medium Duty Range

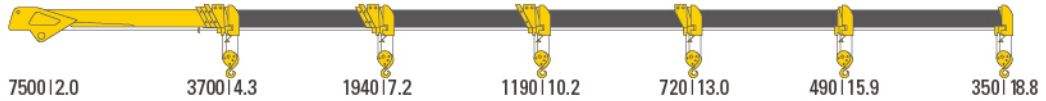
## SCS736

Lifting Capacity (kg | m)



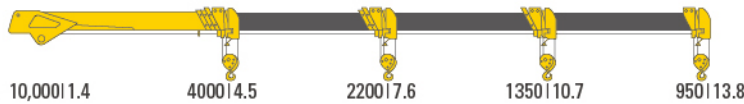
## SCS736LII

Lifting Capacity (kg | m)



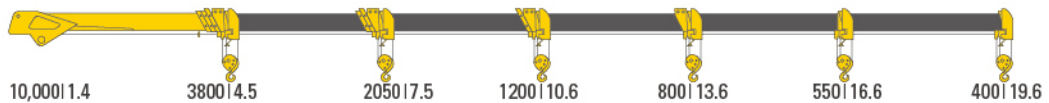
## SCS1004SA

Lifting Capacity (kg | m)



## SCS1006SA

Lifting Capacity (kg | m)



Description		Unit	SCS 736	SCS 736L II	SCS 1004SA	SCS 1006SA
Capacity	Max. Lifting Capacity	ton-m	15.0	15.0	20	17.5
	Max. Lifting Height	m (Aux. Boom)	17.4 (22.4)	20.8 (25.8)	16.1	21.8 (26.8)
	Max. Working Radius	m (Aux. Boom)	15.4 (20.4)	18.8 (23.8)	13.8	19.6 (24.6)
	Max. Working Height	m (Aux. Boom)	18.1 (23.1)	21.5 (26.5)	16.9	22.6 (27.6)
Boom	Type / Section		Hexa / 6		Hexa / 4	Hexa / 6
	Boom Extension Speed	m / sec	11.78 / 30	14.5 / 30	7.36 / 16	15.1 / 33
Winch	Boom Moving Up and Down Speed	° / sec	1~76 / 15		1~80 / 12	
	Winch Hauling Speed	m / min (Layer/Line)	14 (4/4)			
Stewing	Wire Rope	ø mm / m	ø10 x 120m			
	Turning Angle		Consecutively turn 360°			
Outrigger	Turning Speed	rpm	2			
	Turning Method		Driven by the hydraulic motor and speed is reduced by the gear			
	Type	Front	Horizontally and manually extracted and retracted			
Hydraulic System	Width	m	5.35	5.6		
	Rated Flow Rate	ℓ / min	65			
Option	Rated Pressure	kgf / cm <sup>2</sup>	210			
	Oil Tank Capacity	ℓ	90	120	120	120
Applicable truck Chassis (Payload)		ton	5.0 and above		7.5 and above	
Option	Aux. Boom (3m, Single Section)		•	•	•	•
	Aux. Boom (5m, Double Section)		•	•	•	•
	Aux. Winch (2t, 1 Speed)		•	•	•	•
	Aux. Winch (2t, 2 Speed)		•	•	•	•
	Bucket (FRP 850 * 1200 : 150kgs)		•	•	•	•
	Bucket (Metalic 850 * 1400 : 180kgs)		•	•	•	•
	AML		•	•	•	•
	Top Seat		•	•	•	•
	Remote Control (Wireless)		•	•	•	•
	Overloading Prevention Device		•	•	•	•
	Overwinding Prevention Device		•	•	•	•
	Overwinding Alarm Device		•	•	•	•
	Single Line Hook (1500kgf)		•	•	•	•
	Single Line Hook (2000kgf)		•	•	•	•
	Outrigger (Rear - Hydraulic)		•	•	•	•
Oil Cooler		•	•	•	•	
Wire Rope Retaining Roller		•	•	•	•	
Winch Guide Roller		•	•	•	•	

### Safety Devices

Pressure relief valve for hydraulic circuit, Overcenter valve, Hydraulic swing locking system, Automatic mechanical brake for winch, Pilot check valve for outriggers, Hook safety latch, Boom angle indicator with load indicator, Overwinding alarm system (Option), Overloading prevention device (Option)

• The above specifications are subject to change without prior notice for improvement. • Bucket, Cabin : Provision of Bucket may require allowances by govern law



#### ▶ Double derrick cylinders

Maximized derricking power by adopting double derrick cylinders and achieved high operating efficiency by enabling the boom angle to 80 degrees.



#### ▶ High efficient oil cooler

To prevent the over-heating due to fatal damages to hydraulic components, cooler runs automatically if the oil temperature reaches a preset maximum temperature.

# Medium Duty Range

## SCS866LS

Lifting Capacity (kg | m)



## SCS867LS

Lifting Capacity (kg | m)



## SCS886

Lifting Capacity (kg | m)



## SCS887

Lifting Capacity (kg | m)



Description		Unit	SCS 866LS	SCS 867LS	SCS 886	SCS 887
Capacity	Max. Lifting Capacity	ton-m	17.5	17.5	21	21
	Max. Lifting Height	m (Aux. Boom)	21.8 (26.8)	24.5 (29.5)	21.8 (26.8)	24.5 (29.5)
	Max. Working Radius	m (Aux. Boom)	19.6 (24.6)	22.3 (27.3)	19.6 (24.6)	22.3 (27.3)
	Max. Working Height	m (Aux. Boom)	22.6 (27.6)	25.2 (30.2)	22.6 (27.6)	25.2 (30.2)
Boom	Type / Section		Hexa / 6	Hexa / 7	Hexa / 6	Hexa / 7
	Boom Extension Speed	m / sec	15.1 / 33	17.5 / 36	15.1 / 33	17.5 / 36
Winch	Boom Moving Up and Down Speed	° / sec	-16° ~ 79°/15			
	Winch Hauling Speed	m / min (Layer/Line)	14 (4/4)			
	Wire Rope	ø mm / m	ø 10 × 120 mm			
Slewing	Turning Angle		Consecutively turn 360°			
	Turning Speed	rpm	1.8			
Outrigger	Turning Method		Driven by the hydraulic motor and speed is reduced by the gear			
	Type	Front	Horizontally and manually extracted and retracted			
	Rear	Vertically, horizontally and automatically extracted and retracted				
Hydraulic System	Width	m	6			
	Rated Flow Rate	ℓ / min	65			
	Rated Pressure	kgf / cm <sup>2</sup>	210			
	Oil Tank Capacity	ℓ	170			
Applicable truck Chassis (Payload)		ton	7.5 and above			
Option	Aux. Boom (3m, Single Section)		●	●	●	●
	Aux. Boom (5m, Double Section)		●	●	●	●
	Aux. Winch (2t, 1 Speed)		●	●	●	●
	Aux. Winch (2t, 2 Speed)		●	●	●	●
	Aux. Winch (2.5t, Standard (2 Speed))		●	●	●	●
	Auger D450		●	●	●	●
	Bucket (FRP 850 * 1200 : 150kgs)		●	●	●	●
	Bucket (Metalic 850 * 1400 : 180kgs)		●	●	●	●
	Top Seat		●	●	●	●
	Remote Control (Wireless)		●	●	●	●
	AML		●	●	●	●
	Overloading Prevention Device		●	●	●	●
	Overwinding Prevention Device		●	●	●	●
	Overwinding Alarm Device		●	●	●	●
	Single Line Hook (1500kgf)		●	●	●	●
Outrigger (Rear - Hydraulic)		●	●	●	●	
Oil Cooler		●	●	●	●	
Winch Guide Roller		●	●	●	●	

### Safety Devices

Pressure relief valve for hydraulic circuit, Overcenter valve, Hydraulic swing locking system, Automatic mechanical brake for winch, Pilot check valve for outriggers, Hook safety latch, Boom angle indicator with load indicator, Overwinding alarm system (Option), Overloading prevention device (Option)

● The above specifications are subject to change without prior notice for improvement. ● Bucket, Cabin : Provision of Bucket may require allowances by govern law



#### Reinforced body frame

The swing post has been reinforced to allow safe operation. Square box type frame structure gives durability and hardness.



#### Canopy for Top-Seat

During working outside, SOOSAN Top-Seat Canopy gives perfect sun protect and pleasant working condition. This option is available for all SOOSAN Top-Seat model with simple installation.

# Heavy Duty Range

## SCS1015F4

Lifting Capacity (kg | m)



## SCS1015F4L

Lifting Capacity (kg | m)



## SCS1224LS

Lifting Capacity (kg | m)



## SCS1215LS

Lifting Capacity (kg | m)



Description		Unit	SCS 1015F4	SCS 1015F4L	SCS 1224LS	SCS 1215LS
Capacity	Max. Lifting Capacity	ton-m	30	30	36	36
	Max. Lifting Height	m (Aux. Boom)	19.5	23.6	19.3	23
	Max. Working Radius	m (Aux. Boom)	17.3	20.7	16.9	20.7
	Max. Working Height	m (Aux. Boom)	20	24.4	20.3	24.5
Boom	Type / Section		HEXA / 5	Hexa / 5	HEXA / 4	Hexa / 5
	Boom Extension Speed	m / sec	12.6 / 40	15.1 / 40	15.1 / 40	15.1 / 40
	Boom Moving Up and Down Speed	° / sec	0-76 / 23	1-81 / 20	1-80 / 15	0-81 / 20
Winch	Winch Hauling Speed	m / min (Layer/Line)	13-23 (4/4)		13-23 (4/4)	
	Wire Rope	ø mm / m	ø 14 x 100m		ø 14 x 120m	
Slewing	Turning Angle		Consecutively turn 360°			
	Turning Speed	rpm	2		2	2
	Turning Method		Driven by the hydraulic motor and speed is reduced by the gear			
Outrigger	Type	Front	Vertically, horizontally and automatically extracted and retracted			
		Rear	Vertically, horizontally and automatically extracted and retracted (Double box type)			
Hydraulic System	Width	m	6.18		6.18	
	Rated Flow Rate	ℓ / min	100 x 100			
	Rated Pressure	kgf / cm <sup>2</sup>	210			
	Oil Tank Capacity	ℓ	250		270	
	Applicable truck Chassis (Payload)	ton	11.0 and above		11.0 and above	
Option	Aux. Boom (4m, Single Section)		•	•		
	Aux. Boom (5m, Single Section)				•	•
	Aux. Winch (3.8t, 2 Speed)		•	•	•	•
	Aux. Winch (4t, 2 Speed)		•	•		•
	Aux. Winch (4.4t, 2 Speed)		•	•	•	•
	Aux. Winch (Special Edition)				•	•
	Bucket (FRP 850 * 1200 : 150kgs)		•	•	•	•
	Bucket (Metalic 850 * 1400 : 180kgs)		•	•	•	•
	Top Seat				•	•
	Remote Control (Wireless)		•	•	•	•
	AML		•	•	•	•
	Overloading Prevention Device		•	•	•	•
	Overwinding Prevention Device		•	•	•	•
	Overwinding Alarm Device		•	•	•	•
	Single Line Hook (2000kgf)		•	•	•	•
Outrigger (Rear - Hydraulic)		•	•	•	•	
Outrigger (Middle)			•	•	•	
Oil Cooler		•	•	•	•	

### Safety Devices

Pressure relief valve for hydraulic circuit, Overcenter valve, Hydraulic swing locking system, Automatic mechanical brake for winch, Pilot check valve for outriggers, Hook safety latch, Boom angle indicator with load indicator, Overwinding alarm system (Option), Overloading prevention device (Option)

• The above specifications are subject to change without prior notice for improvement. • Bucket, Cabin : Provision of Bucket may require allowances by govern law



#### High efficient dual oil cooler

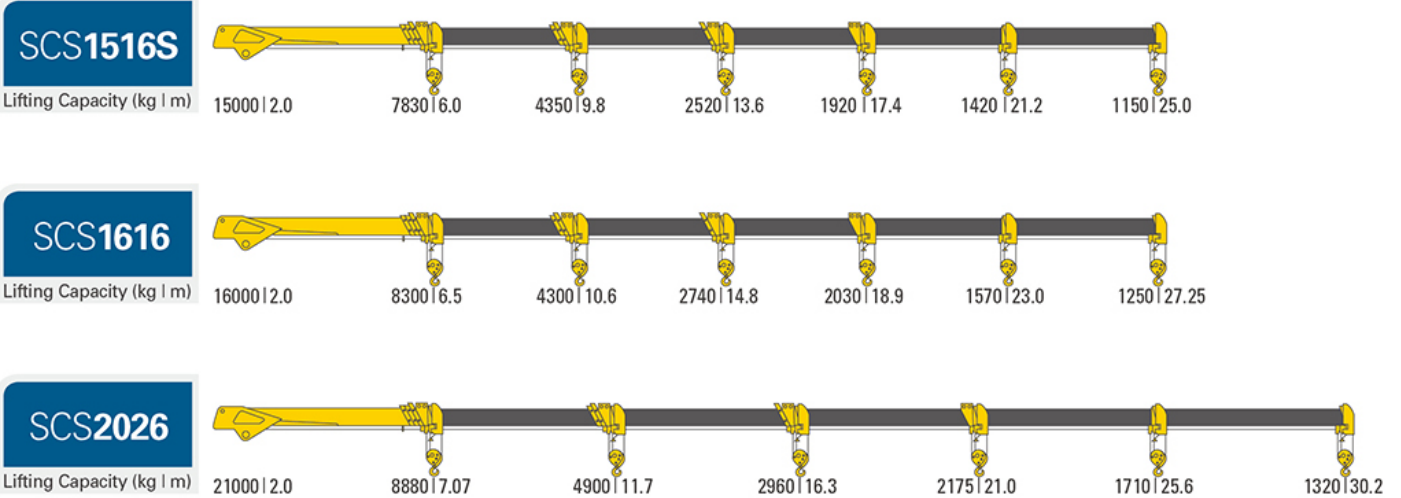
A large sized dual oil cooler maximizes hydraulic operating efficiently.



#### High quality return filter

An efficient return filter purifies returned oil and maintains clean hydraulic system.

# Heavy Duty Range



Description		Unit	SCS1516S	SCS 1616	SCS 2026
Capacity	Max. Lifting Capacity	ton-m	47	53.8	65.0
	Max. Lifting Height	m (Aux. Boom)	27.5	30.1 (35.1)	32.2 (37.2)
	Max. Working Radius	m (Aux. Boom)	25	27.2 (32.1)	30.2 (35.2)
	Max. Working Height	m (Aux. Boom)	28.5	31.1 (36.1)	33.7 (38.7)
Boom	Type / Section		HEXA 6	HEXA / 6	
	Boom Extension Speed	m / sec	19/62	20.4 / 45	21.5 / 55
	Boom Moving Up and Down Speed	° / sec	-13-80°/40	-12- + 80 / 40	-11- + 80 / 30
Winch	Winch Hauling Speed	m / min (Layer/Line)	7-12 (4/4)	9.2-16 (4/4)	
	Wire Rope	ø mm / m	ø14 x 120m	ø14 x 120m	
Slewing	Turning Angle		Consecutively turn 360°		
	Turning Speed	rpm	1.8	2.0	2.0
	Turning Method		Driven by the hydraulic motor and speed is reduced by the gear		
Outrigger	Type	Front	Vertically, horizontally and automatically extracted and retracted		
		Rear	Vertically, horizontally and automatically extracted and retracted (Double box type)		
Hydraulic System	Width	m	6.5	7.8	
	Rated Flow Rate	ℓ / min	100 x 100		
	Rated Pressure	kgf / cm <sup>2</sup>	220	210	
	Oil Tank Capacity	ℓ	250	270	
	Applicable truck Chassis (Payload)	ton	Above 14ton	15.0 and above (2 front axial)	25.0 and above (2 front axial)
Option	Aux. Boom (4m, Single Section)				
	Aux. Boom (5m, Single Section)		•	•	•
	Aux. Winch (3.8t, 2 Speed)		•	•	•
	Aux. Winch (4t, 2 Speed)				•
	Aux. Winch (4.4t, 2 Speed)		•	•	•
	Aux. Winch (Special Edition)		•	•	•
	Bucket (FRP 850 * 1200 : 150kgs)		•	•	•
	Bucket (Metalic 850 * 1400 : 180kgs)		•	•	•
	Top Seat		•	•	•
	Remote Control (Wireless)		•	•	•
	AML		•	•	•
	Overloading Prevention Device		•	•	•
	Overwinding Prevention Device		•	•	•
	Overwinding Alarm Device		•	•	•
	Single Line Hook (2000kgf)		•	•	•
	Outrigger (Rear - Hydraulic)		•	•	•
Outrigger (Middle)		•	•	•	
Oil Cooler		•	•	•	

### Safety Devices

Pressure relief valve for hydraulic circuit, Overcenter valve, Hydraulic swing locking system, Automatic mechanical brake for winch, Pilot check valve for outriggers, Hook safety latch, Boom angle indicator with load indicator, Overwinding alarm system (Option), Overloading prevention device (Option)

- The above specifications are subject to change without prior notice for improvement.
- Bucket, Cabin : Provision of Bucket may require allowance by govern law



### High efficient slewing reduction gear

Heavy-duty slew bearing and high-performance planetary reduction gear increases work efficiency by giving smooth and fact operation.



### Optimized design

The optimum design through load-stress distribution simulation is analyzed by finite element method. It shows the finest performance in any environment with an excellent lifting capacity and working radius.

# MULTIPURPOSE SOOSAN CRANE



**Auger Crane**



**Crane for Vessel**



**Stationary Crane**



**Construction Site**



**Port Support Service**



**Crane for Oil Field**

## ► Applications and Features

Providing time-saving, cost-effective and reliable load handling solutions for construction and civil engineering, factory, oil & gas field, logistics, military logistics, mining, port and shipyard, general transport, public utilities etc. Combination of stiff boom and winch with wire rope enables easy and efficient operation for material handling even in confined a work space Such as deep-underground, high-rise building, under bridges etc.

### SOOSAN HEAD OFFICE (KOREA)

260, Jeongmunsongsan-ro, Yanggam-myeon,  
Hwaseong-si, Gyeonggi-do, Republic of Korea

TEL +82-31-350-5251 Email [willy@soosan.co.kr](mailto:willy@soosan.co.kr)

### SOOSAN DUBAI OFFICE (UAE)

P.O BOX 262280, LOB14-313, Jebel Ali Free Zone,  
Dubai, UAE.

TEL +971-4-881-0502 Email [kimht@soosan.co.kr](mailto:kimht@soosan.co.kr)



Distributed by