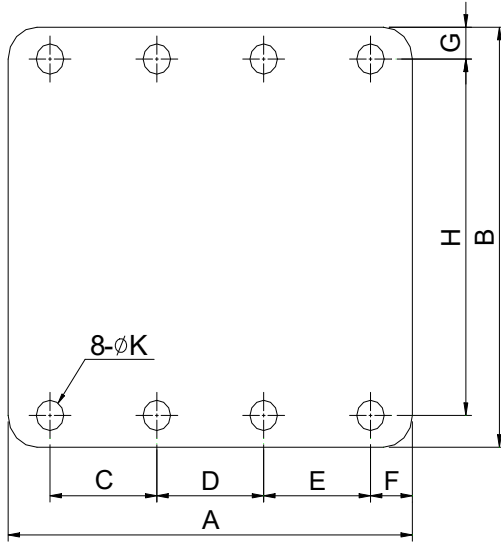
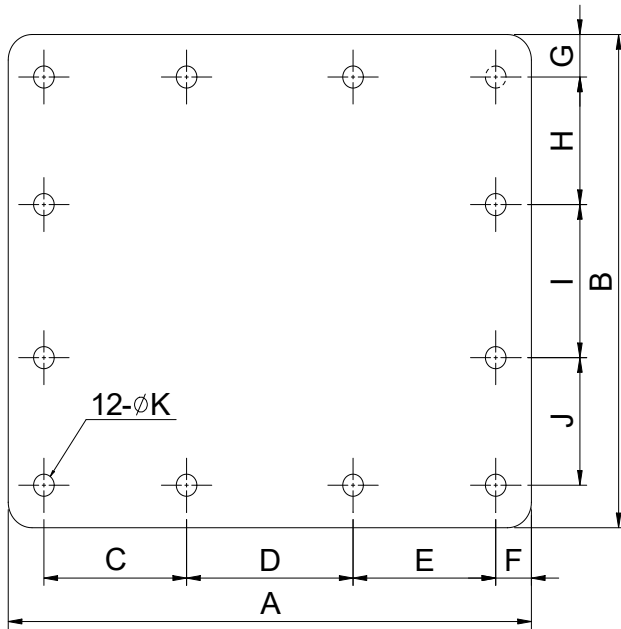


Bolt hole patterns : SB TS-P Series (SB10IITS-P ~ SB43IITS-P)


Unit : mm

Model	A	B	C	D	E	F	G	H	K
SB10 IITS-P	272	264	74	74	74	25	20	224	19
SB20 IITS-P	272	264	74	74	74	25	20	224	19
SB30II TS-P	272	264	74	74	74	25	20	224	19
SB35II TS-P	404	324	115	124	115	25	25	274	21
SB40II TS-P	404	324	115	124	115	25	25	274	21
SB43II TS-P	404	324	115	124	115	25	25	274	21

Bolt hole patterns : SB TS-P Series (SB45TS-P ~ SB151TS-P)


Unit : mm

Model	A	B	C	D	E	F	G	H	I	J	K
SB45 TS-P	570	420	170	180	170	25	25	120	130	120	21
SB50 TS-P	570	420	170	180	170	25	25	120	130	120	21
SB60 TS-P (#2398~)	640	550	180	210	180	35	35	150	180	150	26
SB80 TS-P (#4602~)	640	550	180	210	180	35	35	150	180	150	26
SB81 TS-P (#8557~)	760	620	225	240	225	35	35	175	200	175	26
SB100 TS-P (#2136~)	760	620	225	240	225	35	35	175	200	175	26
SB121 TS-P (#5235~)	856	720	258	260	258	40	40	220	200	220	38
SB130 TS-P (#3363~)	856	720	258	260	258	40	40	220	200	220	38
SB140 TS-P (#1481~)	856	720	258	260	258	40	40	220	200	220	38
SB151 TS-P (#1086~)	856	720	258	260	258	40	40	220	200	220	38